



# Membership Application Form

[info@leweschamber.org.uk](mailto:info@leweschamber.org.uk)  
[www.leweschamber.org.uk](http://www.leweschamber.org.uk)

 LewesChamber  LewesChamber



# Thank you for your enquiry regarding membership of the Lewes Chamber of Commerce.

There are many benefits to joining the Chamber and we are working hard to promote and protect the thriving business community in Lewes.

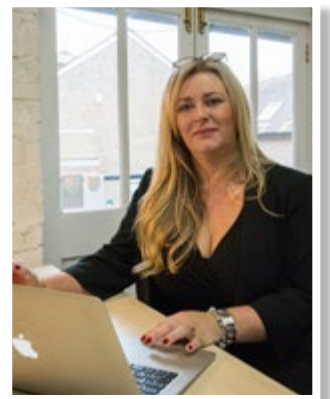
I hope this information will be both interesting and self-explanatory. However, do not hesitate to email me directly via [president@leweschamber.org.uk](mailto:president@leweschamber.org.uk) if you have any questions about the Chamber, the work we do, or to discuss how membership can benefit your business.

Membership is inexpensive and the application is straightforward.

I do hope we will be able to welcome you into the Lewes Chamber of Commerce and meet you at one of our events in the near future.

Yours sincerely

**Clare Crouch**  
President



The Lewes Chamber of Commerce was established in the 1930s and has a membership made up of businesses who are based in or trade in Lewes. The membership includes businesses of all types and sizes from sole traders to multi-million businesses with hundreds of staff. The Chamber is key to the promotion of the interests of the business community in Lewes and helps to attract new customers to the town by hosting joint Chamber networking and organising the popular Late Night Shopping event in December.

## Membership

When you join the Lewes Chamber of Commerce you become part of one of the town's most effective business groups. You increase the opportunities to do business within Lewes. You can share your knowledge and expertise, and in turn you get access to a new business network.

The Chamber is the voice of the Lewes' business community and we use this voice to help our members build successful businesses. We are starting to develop a reputation for providing high-quality networking opportunities and delivering seminars that are full of inspirational advice.

## Benefits

Membership of the Chamber gives you access to an ever growing list of benefits including:

- Networking opportunities to meet new contacts
- A voice to liaise, consult and lobby Town, District and County Councils on matters that affect business in Lewes
- Opportunity to share news and offers via our monthly email newsletter
- Invitations to social and business events
- Membership of the Chamber LinkedIn Group to discuss and share information with other members
- Access to other Chambers of Commerce
- A 'heads up' on developments that could affect your business

Through our growing programme of activities and through our close links with relevant organisations, we provide a wide range of benefits and opportunities for members that are unavailable to other businesses.

## Don't just join, join in!

The work of the Chamber is undertaken by volunteers who serve on a variety of committees and portfolios. These volunteers are committed to delivering benefits to the members and use their skills and give their time as required.

## The Chamber has four key portfolios:

- Promoting local trade and commerce
- Protecting the interests of the local business community
- Support and advice to local business
- Engagement with the wider local community

Like with many things in business the more you put in, the more you will get out of Chamber membership. If you would like to get involved in one of the portfolios, or would like to find out more about their activities please feel free to contact the Chamber – [secretary@leweschamber.org.uk](mailto:secretary@leweschamber.org.uk)

## The Executive Committee

- **Clare Crouch**, President
- **Ashley Price**, Secretary
- **Andrew Wells**, Hon. Treasurer
- **Sarah Edmunds**, Hon. Solicitor
- **Adam Bagnall**
- **David Hurford**
- **Fiona Kay**

**If you would like to have a say in decisions regarding the future of Lewes and the prosperity of the business community, join today.**



# Application for Membership

Please complete this form and return it, together with payment for the appropriate membership fee to: Lewes Chamber of Commerce, C/O Town Hall, High Street, Lewes, BN7 2QS.

Name of Business:	
Address:	
Postcode:	
Website:	
Nature of business:	
Name:	
Position:	Number of employees:
Tel:	Email:
A short description (75 words) of your business:	
Twitter:	Facebook:
Linkedin:	Instagram:

## Membership fees \*

Business	Annual Fee	Tick
1-4 employees	£ 60.00	
5-10 employees	£ 80.00	
11+ employees	£ 100.00	
Charity / Not-for-profit / CIC	£ 25.00	

## Ways to pay

- I enclose a cheque for £ \_\_\_\_\_ made payable to **Lewes Chamber of Commerce**
- I have paid online £ \_\_\_\_\_ with my **Business Name** as reference to:  
**Sort Code: 40-28-15/ Account no: 61400746**

RECEIPT REQUIRED: YES  / NO

Signed:	Position:
Name:	Date:

\* Membership fees are renewable on 1st January each year.